

Architectural Sketches for the Phase-2 Infrastructure of the Residential Campus Created by Prof Raja Kumar, Director During 2016-17

Prof R V Raja Kumar served as the 2nd director of IIT Bhubaneswar during 22nd April 2015 to 2nd April 2022.

On his advise, selection of the architect for the Phase-2 constructions of the institute was made giving importance to submissions made by the participating architectural agencies on a theme based campus architecture (for Phase-2) they have proposed without disturbing the part of infrastructure already created under Phase-1. There were 4 participants in the bidding process leading to submission of 4 different architectural models proposed as per their own vision and creativity. The finally selected architect was asked to further improve his/her original submission before proceeding forward.

After examining the final submission from the architect, Prof Kumar felt that there is a scope for better designs. He personally created a plan as per the picture he has arrived at in his mind by working constantly over it. He shared the same with the Heads of School for suggestions and the architect for further improvements, if any. The architect appreciated that plan and made the formal plan as per the same. The BoG accorded approval to the same for proceeding with construction. Thus the architectural models proposed by him were approved, constructions were made as per the same and by April 2022 most of the infrastructure was made. Details of the same including the informal diagrams prepared by himself for the residential campus in 2-3 pieces are given overleaf along with the final google earth picture, for recording the history and for posterity.

He is a professor of Electronics & Comm., Engg with research and system design & development experience in Communication Systems, Signal Processing and Detection Systems. Though he has not been a Civil Engineer, due to his passion for creating an exceptional institute of global class and wellness, very exceptionally extended his proficiency to the domains of Civil Engg, Planning and Architecture and engaged in the infrastructure creation by taking the responsibility of planning, providing the important main architecture, getting the work executed by the PMC's and very importantly monitoring quality (on daily basis) in an exceptional way right from day one and ensuring excellent infrastructure, directly onto own shoulders. Exceptional successes could be achieved on all fronts in this endeavour and he dedicates the same to Shri Jayarama Krishna Prasad, his beloved father, an outstanding Civil Engineer who has sown the seeds of engineering aptitude and design thinking in him from his childhood. As a school going boy, he learnt some Civil Engg practices by observing his father in action on sites, which not only came handy for IITBBS, but also RGUKT during his previous assignment. Prof Kumar is confident that the Phase-2 infrastructure, apart from being global class, would continue its lustre and incur very low maintenance costs, in view of its quality assurance.

Architectural Plan for the Green Play Fields and the Residential Spine (part of residential Campus) Created by Prof Kumar During 2016 - 2017

Grand residential spine

The sports complex should be in one piece. The track and Football/hockey can be interchanged depending on actual size and place available at that place.

Foot ball /
Hockey / mkt
+water pond

SAC

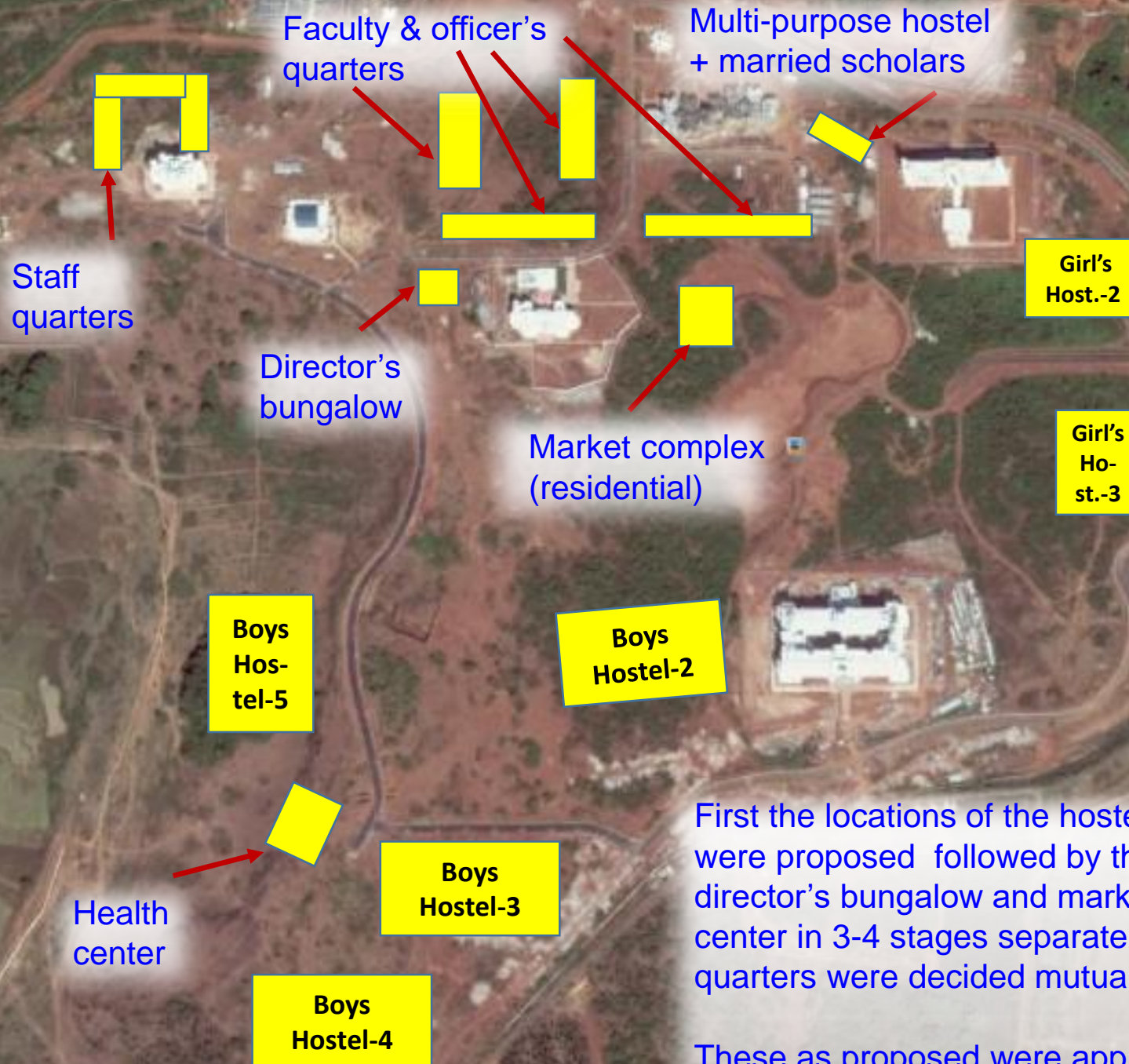
Athletics
track + Foot-
ball ground
+ Throws

Foot ball
/ Hockey

**O/D
games**

Cricket
ground

Architectural Plan for Residential Buildings Proposed by Prof Kumar During 2016 - 2018 in Stages



First the locations of the hostels, play fields and quarters were proposed followed by the multi-purpose hostel, director's bungalow and market and finally the health center in 3-4 stages separately. Faculty and staff quarters were decided mutually with the architect.

These as proposed were approved by BoG and majority of these were taken up for phase-2 constructions.

Subsequent Additional Architectural Elements Created for Play Fields, by Prof Kumar During 2016 - 2017

At this location, between the GH and track, a low cost N-S gallery steps (east – west) be constructed by cutting into the laterite rock of a good height available, there.

On the western side of the athletics track + area for throws a gallery stand along with public conveniences and store be constructed. To facilitate organizing open air functions, a small stage be constructed in the center of the gallery.

Cricket ground

Athletics track + area for throws/ Foot-ball ground

Foot ball / Hockey / mkt + water body

Foot ball / Hockey

O/D play courts

SAC

The grand residential spine

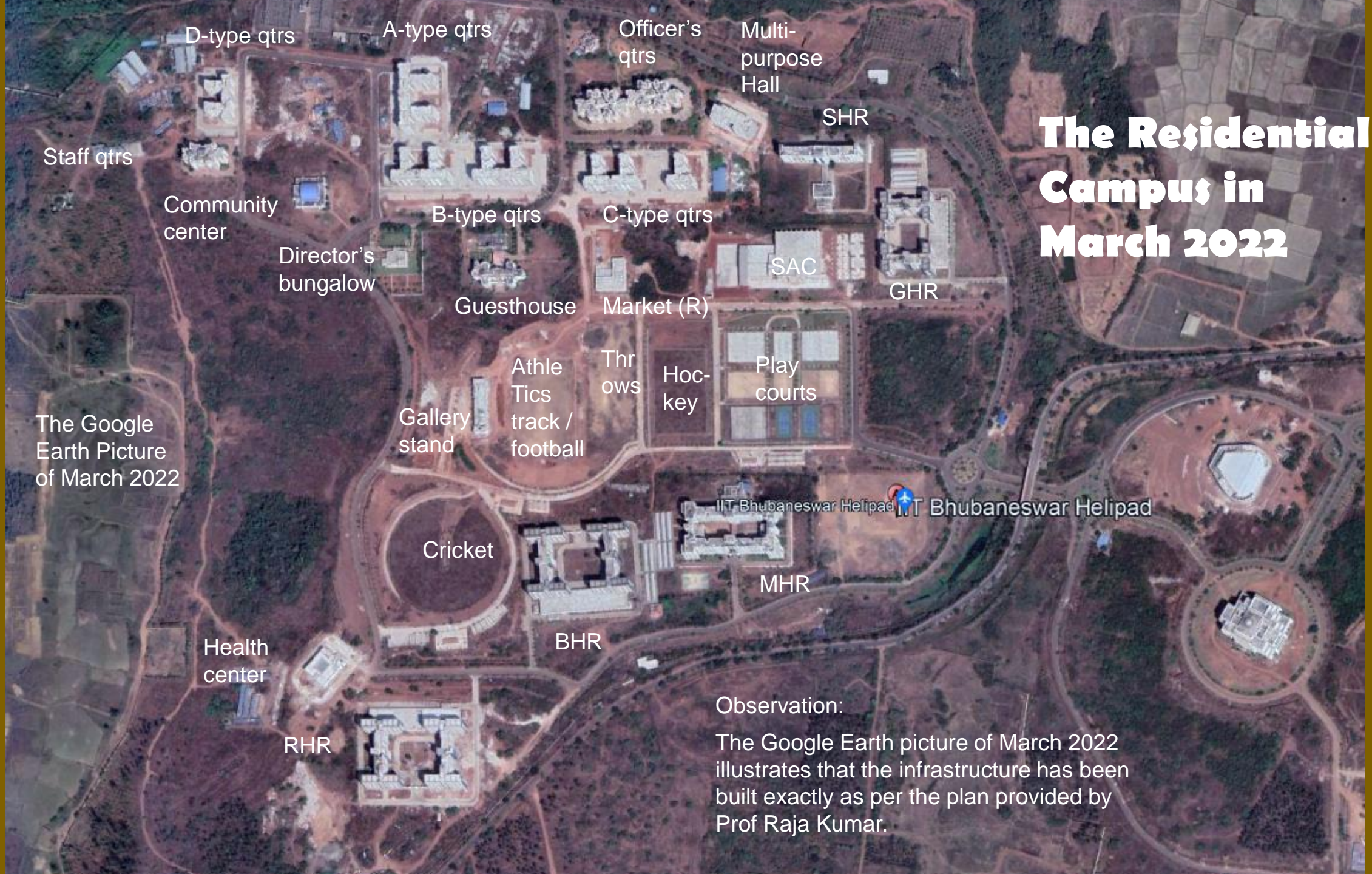
The play fields and courts be provided with aesthetically good looking equipment rooms with Mangalore tile slanted roof and conveniences.

Typical st gymkhana + indoor Yoga/meditation/basketball + badminton

The sports complex is being proposed to be in one piece, proximal to hostels and the quarters and can suit holding of Inter IIT Sports Meets. My Google earth measurement shows the availability of more than 40 acres of space.

It should be a green complex with only green (shrub) fences in place of metal meshes.

The track and Football/hockey may be finalized after examining actual size and place available at that place.



The Residential Campus in March 2022

The Google Earth Picture of March 2022

Observation:
The Google Earth picture of March 2022 illustrates that the infrastructure has been built exactly as per the plan provided by Prof Raja Kumar.

Initial Master Plan Proposal from the Architect

